

BATH TOWNSHIP
BOARD OF
ZONING APPEALS

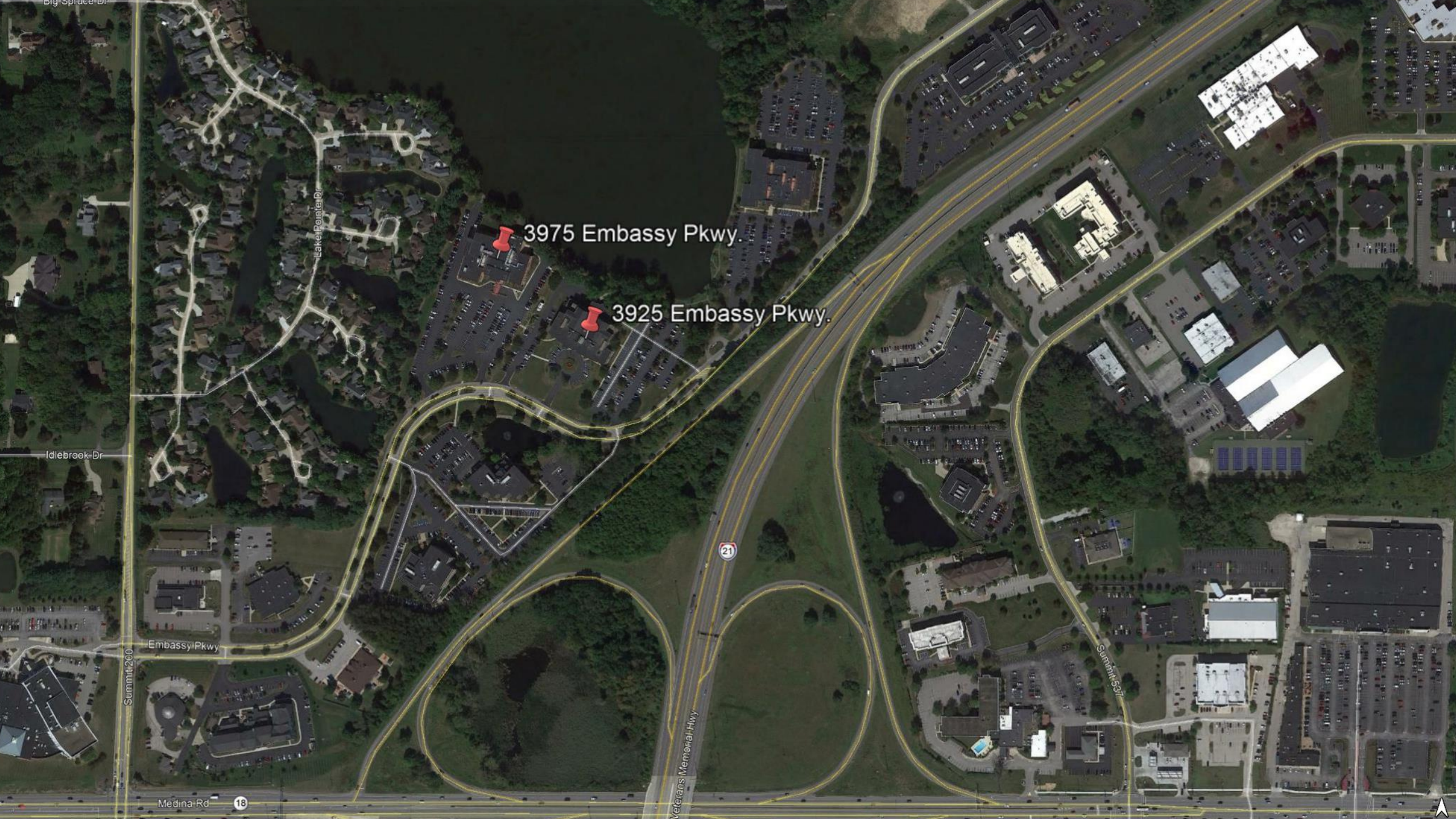
March 18, 2025





BZA 25-02

- David Soulsby
- 3925 and 3975 Embassy Parkway
- Requesting variance from Article 13, Section 1309-A(1)(D) and from Section 1309-D(4) to exceed the allowed height and area for monument and permanent driveway signs



3975 Embassy Pkwy.

3925 Embassy Pkwy.

Medina Rd 18

Embassy Pkwy

21

Veterans Memorial Hwy

Summit 607

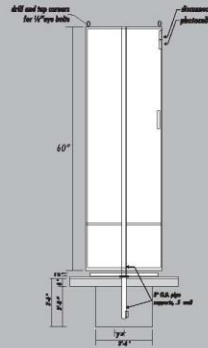
Summit 200

Lake Pointe Dr

Idlebrook Dr

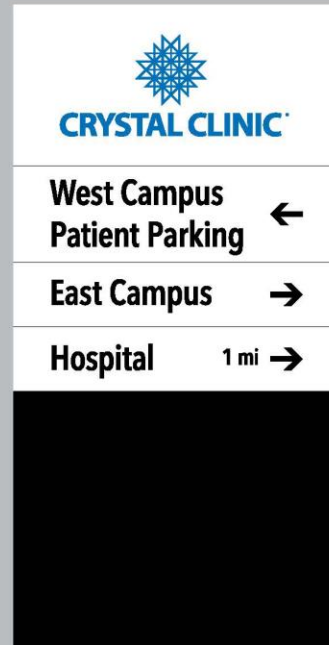
Crystal Clinic Exterior Wayfinding Signage

QTY (2): 60" H x 30" W
 Non-Illuminated 5" Cabinet
 All Aluminum
 Primed & Painted (2) Colors
 Opaque Vinyl Graphics
 Center 3" x 3" Post for Direct Burial
 New Signs



#6
Single Sided

#8
Single Sided



***Central Graphics, Inc. is not responsible for damage to any surface as a result of the application/removal of graphics to/from that surface. Surfaces include but are not limited to vehicles, walls, floors & windows.**

CENTRAL GRAPHICS
 924 HOME AVE
 AKRON, OH 44310
 PH: 330-928-7080
 www.centralgraphicsgroup.com
 sales@centralgraphicsgroup.com

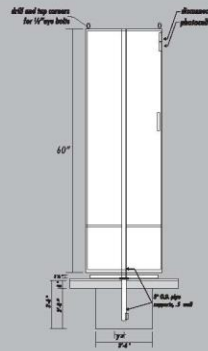
IMAGE ALERT!
 All Printers and Monitors Represent Colors Differently. Please See Approved Color Samples For Accurate Representation. Colors Shown Do Not Represent The Final Output

© COPYRIGHT NOTICE
 This Drawing And All Reproductions Thereof Are The Property Of Central Graphics, Inc. (CGI) And May Not Be Used In Any Way Without Verbal Or Written Consent Of CGI.



Crystal Clinic Exterior Wayfinding Signage

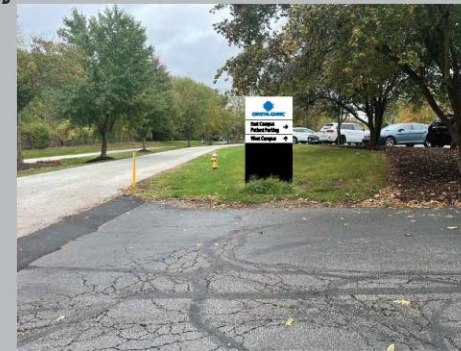
QTY (3): 60" H x 30" W
 Non-Illuminated 5" Cabinet
 All Aluminum
 Primed & Painted (2) Colors
 Opaque Vinyl Graphics
 Center 3" x 3" Post for Direct Burial
 New Signs



#5A



#5B



#5C



#5A
Single Sided

#5B (Front)
Double Sided

#5B (Back)
Double Sided

#5C
Single Sided

CRYSTAL CLINIC

Plastic Surgeons ↑

Hand & Wrist ↑

Administration ↑

27" H

CRYSTAL CLINIC

East Campus Patient Parking →

West Campus ↑

6" H

CRYSTAL CLINIC

East Campus Patient Parking ←

Hospital 1 mi ↑

9" H

CRYSTAL CLINIC

Plastic Surgeons ↑

Hand & Wrist ↑

Administration ↑

24" H

30" H

Ground



***Central Graphics, Inc. is not responsible for damage to any surface as a result of the application/removal of graphics to/from that surface. Surfaces include but are not limited to vehicles, walls, floors & windows.**

CENTRAL GRAPHICS
 924 HOME AVE
 AKRON, OH 44310
 PH: 330-928-7080
 www.centralgraphicsgroup.com
 sales@centralgraphicsgroup.com

IMAGE ALERT!
 All Printers and Monitors Represent Colors Differently. Please See Approved Color Samples For Accurate Representation. Colors Shown Do Not Represent The Final Output

© COPYRIGHT NOTICE
 This Drawing And All Reproductions Thereof Are The Property Of Central Graphics, Inc. (CGI) And May Not Be Used In Any Way Without Verbal Or Written Consent Of CGI.

DESIGN

PRODUCTION

INSTALLATION

Crystal Clinic
Exterior Wayfinding Signage

QTY (1): 18"H x 30"W
 All Aluminum Post n Panel
 Double Sided Opaque Vinyl Graphics
 3" x 3" Post for Direct Burial
 #10



***Central Graphics, Inc. is not responsible for damage to any surface as a result of the application/removal of graphics to/from that surface. Surfaces include but are not limited to vehicles, walls, floors & windows.**

CENTRAL GRAPHICS
 924 HOME AVE
 AKRON, OH 44310
 PH: 330-928-7080
 www.centralgraphicsgroup.com
 sales@centralgraphicsgroup.com

IMAGE ALERT!
 All Printers and Monitors Represent
 Colors Differently. Please See
 Approved Color Samples For
 Accurate Representation. Colors Shown
 Do Not Represent The Final Output

© COPYRIGHT NOTICE
 This Drawing And All Reproductions
 Thereof Are The Property Of
 Central Graphics, Inc. (CGI) And
 May Not Be Used In Any Way Without
 Verbal Or Written Consent Of CGI.

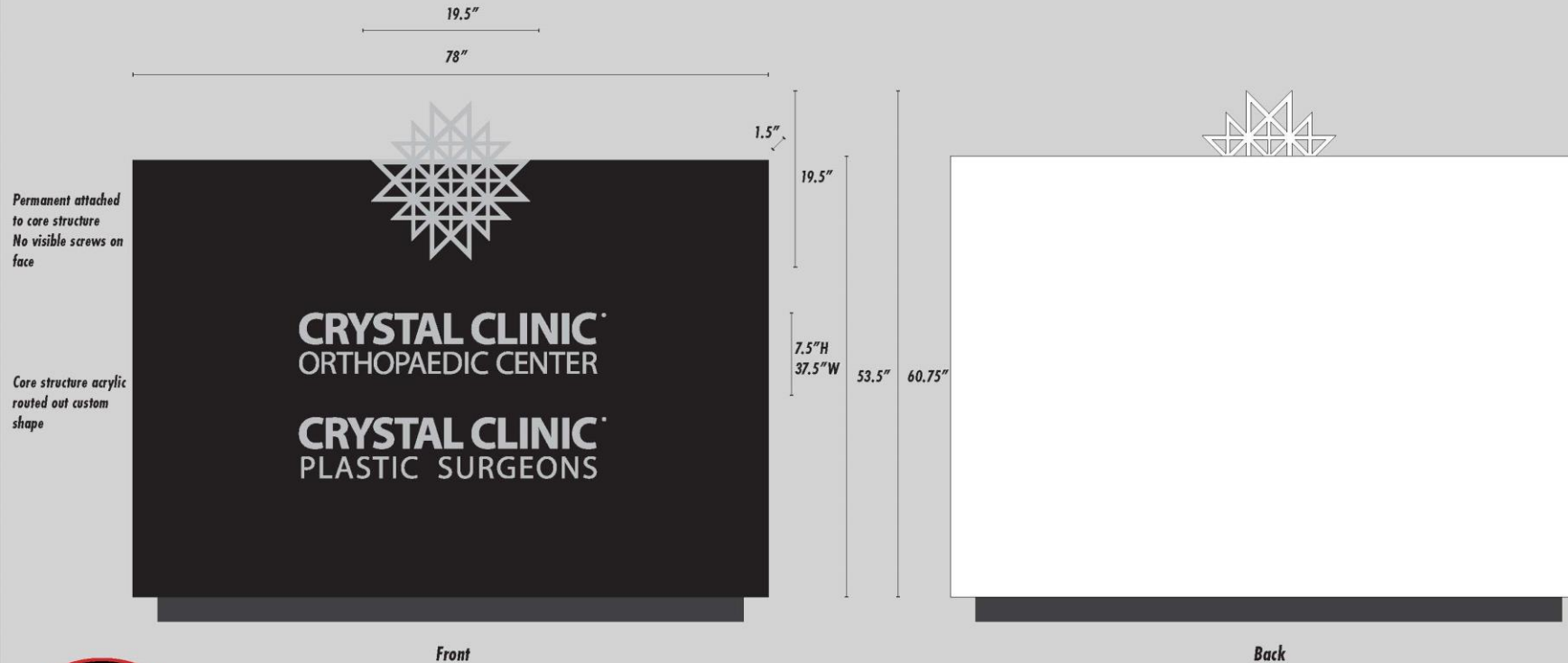
DESIGN

PRODUCTION

INSTALLATION

Crystal Clinic
Exterior Wayfinding Signage

QTY (1): 60.75"H x 78"W
Single Sided Face
Non-Illuminated
Face Change on Existing Structure



***Central Graphics, Inc. is not responsible for damage to any surface as a result of the application/removal of graphics to/from that surface. Surfaces include but are not limited to vehicles, walls, floors & windows.**

CENTRAL GRAPHICS
924 HOME AVE
AKRON, OH 44310
PH: 330-928-7080
www.centralgraphicsgroup.com
sales@centralgraphicsgroup.com

IMAGE ALERT!
All Printers and Monitors Represent Colors Differently. Please See Approved Color Samples For Accurate Representation. Colors Shown Do Not Represent The Final Output

© COPYRIGHT NOTICE
This Drawing And All Reproductions Thereof Are The Property Of Central Graphics, Inc. (CGI) And May Not Be Used In Any Way Without Verbal Or Written Consent Of CGI.

DESIGN

PRODUCTION

INSTALLATION

Crystal Clinic
Exterior Wayfinding Signage

QTY (1): 30" H x 48" W
 Single Sided Non-Illuminated
 Full Coverage Opaque Vinyl Graphics
 Face Change on Existing Structure



Front



Back



***Central Graphics, Inc. is not responsible for damage to any surface as a result of the application/removal of graphics to/from that surface. Surfaces include but are not limited to vehicles, walls, floors & windows.**

CENTRAL GRAPHICS
 924 HOME AVE
 AKRON, OH 44310
 PH: 330-928-7080
 www.centralgraphicsgroup.com
 sales@centralgraphicsgroup.com

IMAGE ALERT!
 All Printers and Monitors Represent Colors Differently. Please See Approved Color Samples For Accurate Representation. Colors Shown Do Not Represent The Final Output

© COPYRIGHT NOTICE
 This Drawing And All Reproductions Thereof Are The Property Of Central Graphics, Inc. (CGI) And May Not Be Used In Any Way Without Verbal Or Written Consent Of CGI.

DESIGN

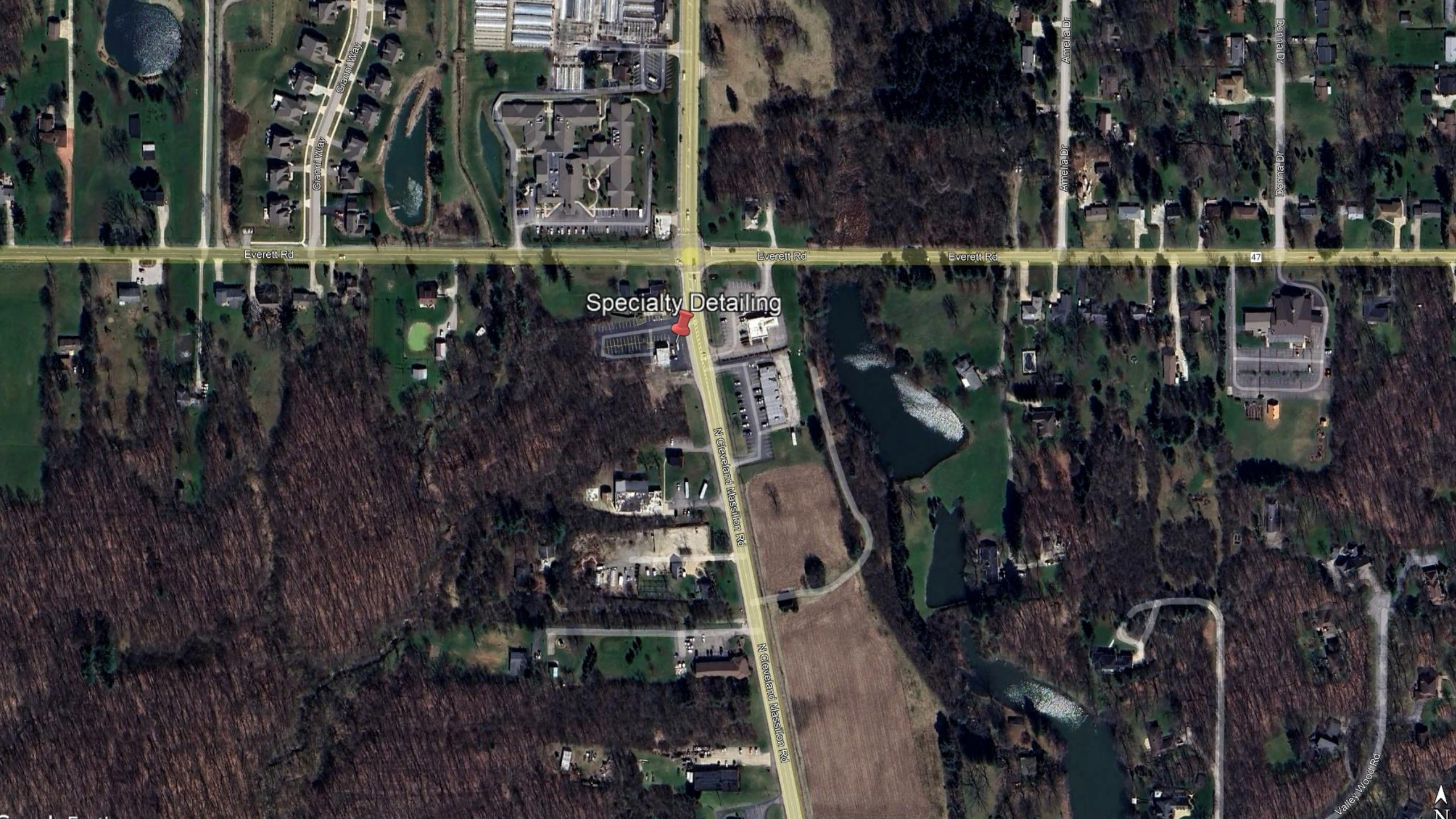
PRODUCTION

INSTALLATION



BZA 25-07

- Stephen Sinopoli
- 2432 N. Cleveland Massillon Rd.
- Requesting Conditional Use approval per Article V, Table 502-1, Automotive service (minor) uses for Specialty Detailing which is an automotive detailing business.



Specialty Detailing

Everett Rd

Everett Rd

Everett Rd

47

Canal Way

Canal Way

Arnelia Dr

Arnelia Dr

Donna Dr

Donna Dr

N Cleveland Massillon Rd

N Cleveland Massillon Rd

Valley Wood Rd





BATH TOWNSHIP ZONING

0 50 100 Feet

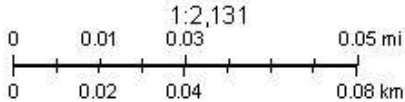


Parcel Viewer Web Map by County of Summit



3/11/2025, 2:48:17 PM

- Parcels
- Jurisdictions







BATH TOWNSHIP
BOARD OF
ZONING APPEALS

